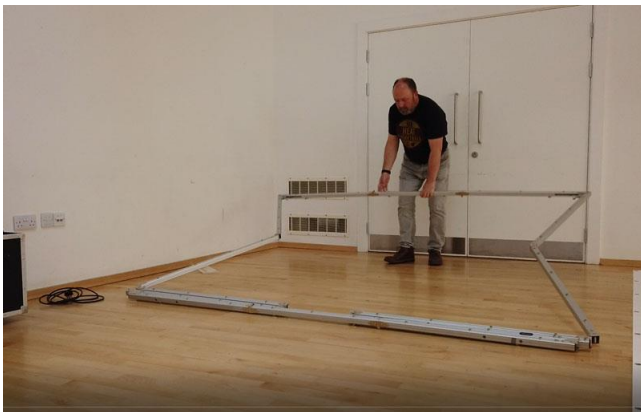


Screen Assembly

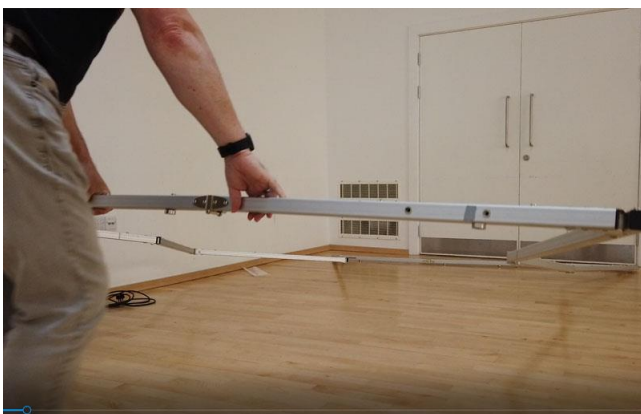
The screen consists of 4 parts: The Frame, two legs and the screen material. You will need a clear floor space of 4m x 4m to layout and setup the screen.

Take the Frame, place it on the floor pointing towards where the audience will sit and unfold it with the press studs facing upwards.

Take one long edge of the screen frame and open up the frame. Then take the other long edge and continue to open out the frame.



The joints of the frame can be gently straightened until they lock in place.



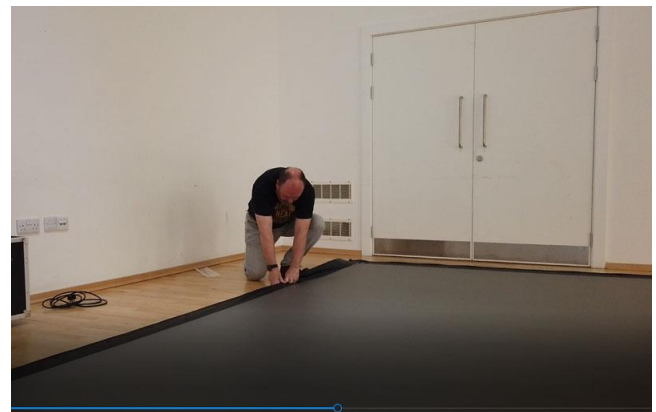
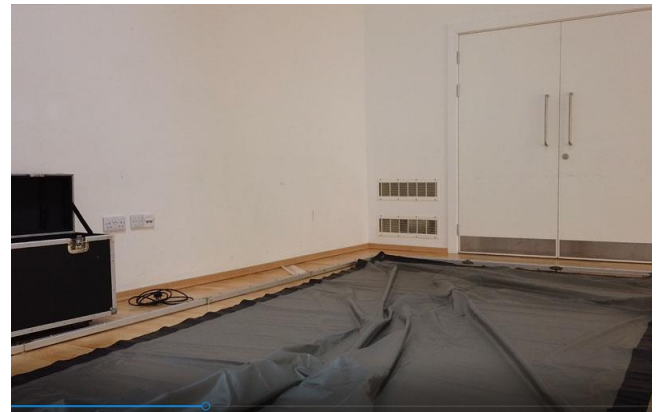
Carefully press the locking mechanism at each corner to secure the frame.



Layout the screen material within the frame so that the press studs facing downwards. For the front projection material this will be with the white side facing upwards.

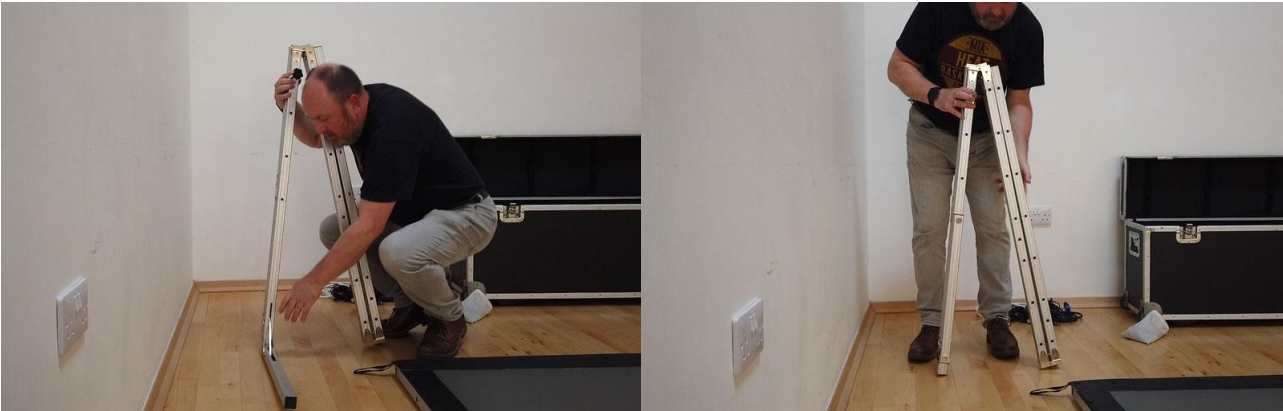
Starting at one corner snap the screen onto the frame using the press studs. Continue all the way round the screen.

Note, the screen will stretch and it is easier if the screen material is not cold.



Assembly the legs.

Fold down the front foot of the legs assembly then unfold the main leg assembly.



Take the back part of the leg with the two black bolt heads (opposite to the opened foot) and move it away from the foot so that it forms a triangle.



Unscrew a quarter turn the two bolts heads halfway down the back of the legs so that the top is free to slide up and down. – NOTE: only unscrew a quarter turn other wise there is a risk that the bolt heads will come away completely.

Slide the top part up so that the bolt hole lines up with the screw point on the back of the front upright leg of the assembly. Take a Screw bolt and screw the back part of the leg to the front.



Retighten the two black head bolts on the back leg and make sure that the hinge locks are snapped into place at the bottom of the uprights.

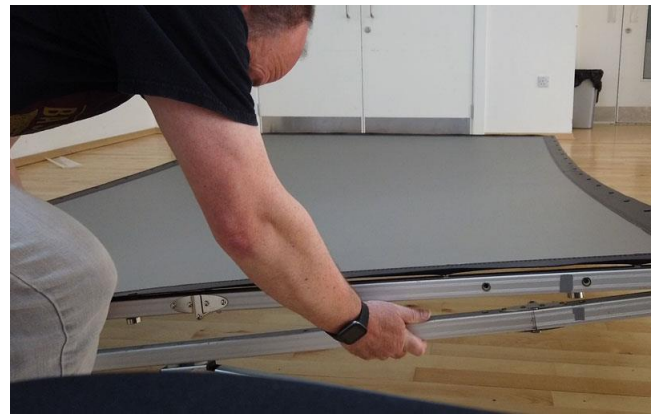
Finally, unfold the top section of the legs, ensure it locks into place.



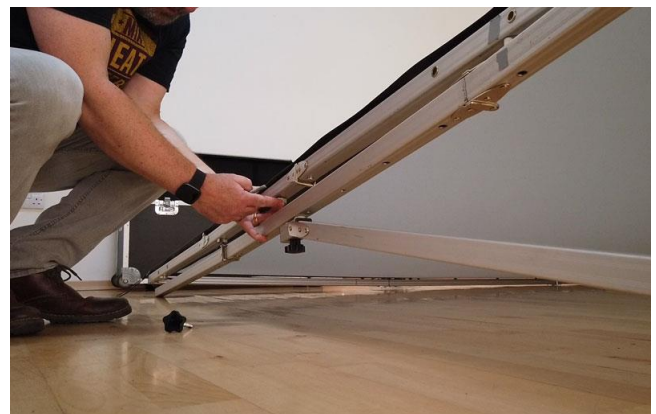
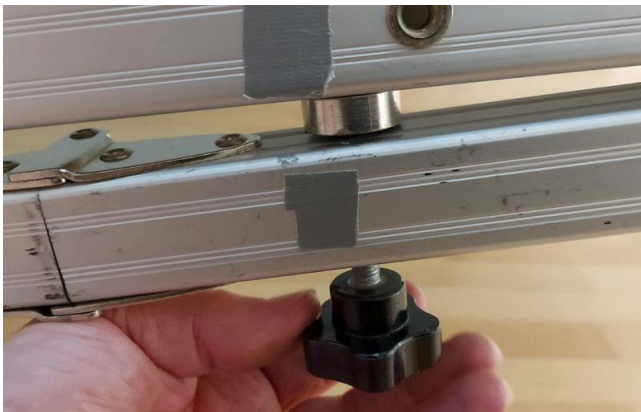
Attaching the legs to the frame.



Place the leg assembly under one side of the screen frame, aligning the top of the leg with the top edge of the frame and the single foot pointing upwards.



Locate the three screw in points on the screen frame and align the holes in the leg assembly. Screw a bolt through the leg into the screw in point at the mid point of the screen first. Then repeat for the points at the top and bottom of the screen.



Then repeat for the other leg.

Once the legs are attached the screen can be lifted upright.

